



*Celebrating Life Through Art*

*Paintings & Sculpture*

# ***Acrylic Layers Workshop***

***With Robyn Ryan***

<https://Robynryanart.com>

[Robyn@RobynRyanArt.com](mailto:Robyn@RobynRyanArt.com)

**540-273-5444**

# Getting Started

- **Objectives:**

1. Unveil the “mystery”
2. Expose you to as many variables as possible
3. Jump start your own creativity for what you might do with this technique!

- **Ground Rules:**

- #1 Play nice and share!
- #2 Have FUN!

- **Opportunities:** Learning from each other as well as me!

- **Subject Matter:** Recommend choosing one and work in series

- **Mantra:** *What if I...?*



# The Process “In a Nutshell”

1. **Choose the support** (paper, panel, canvas, object...)
2. **Prepare the support** (underpainting)
3. **Apply acrylic gel (*layer #1*)**... and manipulate if desired (emboss, embed something...) let dry...
4. **Paint** (draw, dust, splatter...) on the acrylic gel ~ Consider what to “hide” and what to “preserve”
5. **Subtract paint** if desired (sanding, rubbing alcohol)
6. **Apply acrylic gel (*layer #2*)**... and manipulate if desired (emboss, embed something...) let dry...
7. **Paint** (draw, dust, splatter...) on the acrylic gel ~ Consider what to “hide” and what to “preserve”
8. **Subtract paint** if desired (sanding, rubbing alcohol)
9. **Repeat “Gel ~ Paint ~ Subtract” steps** (or variations we will explore) for as many layers as necessary to achieve desired effect(s)!





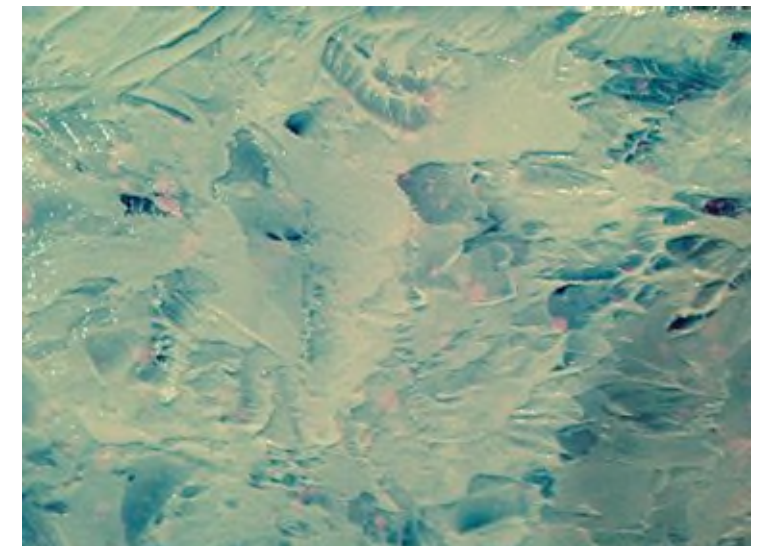
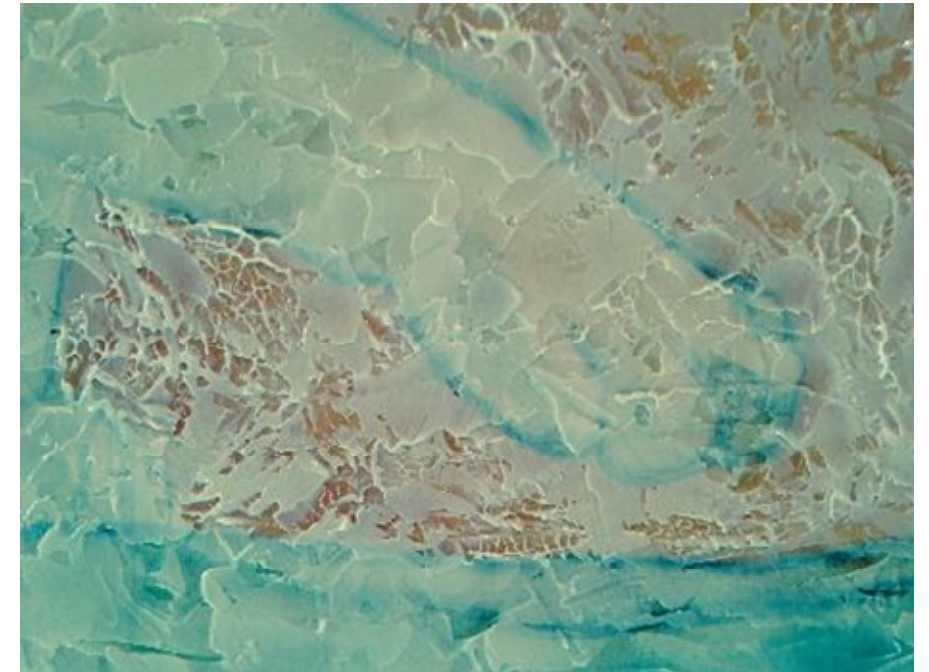
# "Under Painting" Techniques

- Random Color - Pattern
- Field of solid color - Dark or Light
- Transfers
- Photos
- Drawings
- Other "Starts"!



# Gel Layers Techniques

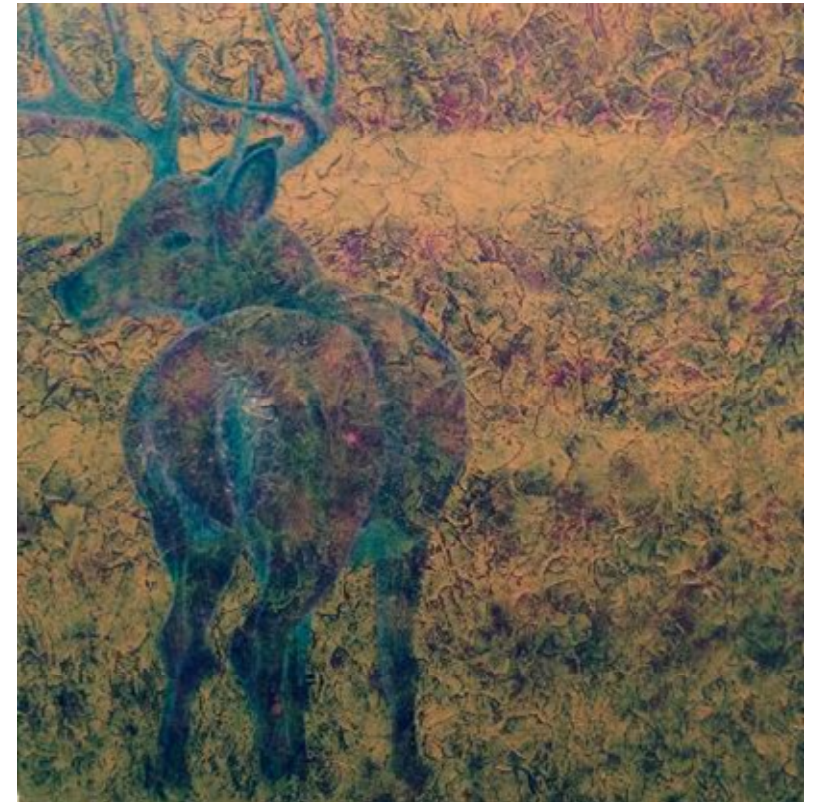
- Random texture with Palette Knife
- Small pattern with Palette Knife Lift
- Embossed Gel with "Stamp"
- Small pattern with Palette Knife "Swipe"
- Embed Something! Collage!
- Cut out / Incise once dry
- Hmmmmmm, what else?





# Painting Layers Techniques

- Initial Application - "Scumble" on to give paint something to "grab" since the dried gel can be "slippery", go back and refine painted area once "scumbled" areas are dry
- Pigment Choice Matters! Transparent (Tone an area) vs. Opaque (Cover an area)
- Layer "decisions" anticipating later layers (*HINT: Resist doing too much on any given layer!!!*)
- Try other media for different effects
  - Charcoal, Graphite, Ink
  - Water-soluble Crayon, Pastel...
- "Reclaiming" earlier layers
  - Sanding
  - Rubbing Alcohol
  - Don't paint an area!



# Finishing Techniques

- Mounting / Framing Options
  - Paper - Mount or Frame
  - Panels - Frame
  - Raised Panels
  - Plexi - Frame, Mount, Raise
- Isolation Layer
  - 1 part Soft Gel - Gloss & 1 part water
- Sealing Layer
  - Polymer Varnish - Semi-Gloss







# Acrylic Layers Worksheet

Support	
Underpainting	
Gel Layer #1	
Painting/Subtraction Layer #1	
Gel Layer #2	
Painting/Subtraction Layer #2	
Gel Layer #3	
Painting/Subtraction Layer #3	
Gel Layer #4	
Painting/Subtraction Layer #4	
Finish	





# Acrylic Layers Worksheet

Support	Under Painting	Gel Layer # 1	Painting Layer # 1	Gel Layer # 2	Painting Layer #2	Gel Layer # 3	Painting Layer #3	Gel Layer # 4	Painting Layer #4
Paper # 1	Random Color	Random p-knife							
Paper # 2	Random Color	Random p-knife							
Paper # 3									
Canvas Panel									
Gesso Panel									
Board									
Raised Panel									
Plexi									
Object									



# Acrylic Layers Worksheet

Support	Gel Layer # 5	Painting Layer # 5	Gel Layer # 6	Painting Layer # 6	Gel Layer # 7	Painting Layer # 7	Isolation Layer	Polymer Varnish
Paper # 1								
Paper # 2								
Paper # 3								
Canvas Panel								
Gesso Panel								
Board								
Raised Panel								
Plexi								
Object								





# Acrylic Layers Worksheet

Support	Under Painting	Gel Layer # 1	Painting Layer # 1	Gel Layer # 2	Painting Layer #2	Gel Layer # 3	Painting Layer #3	Gel Layer # 4	Painting Layer #4



# Acrylic Layers Worksheet

Support	Gel Layer # 5	Painting Layer # 5	Gel Layer # 6	Painting Layer # 6	Gel Layer # 7	Painting Layer # 7	Isolation Layer	Polymer Varnish